

Figure 9-36 Form end dams wherever flashing terminates at windows, doors, and against adjacent construction.

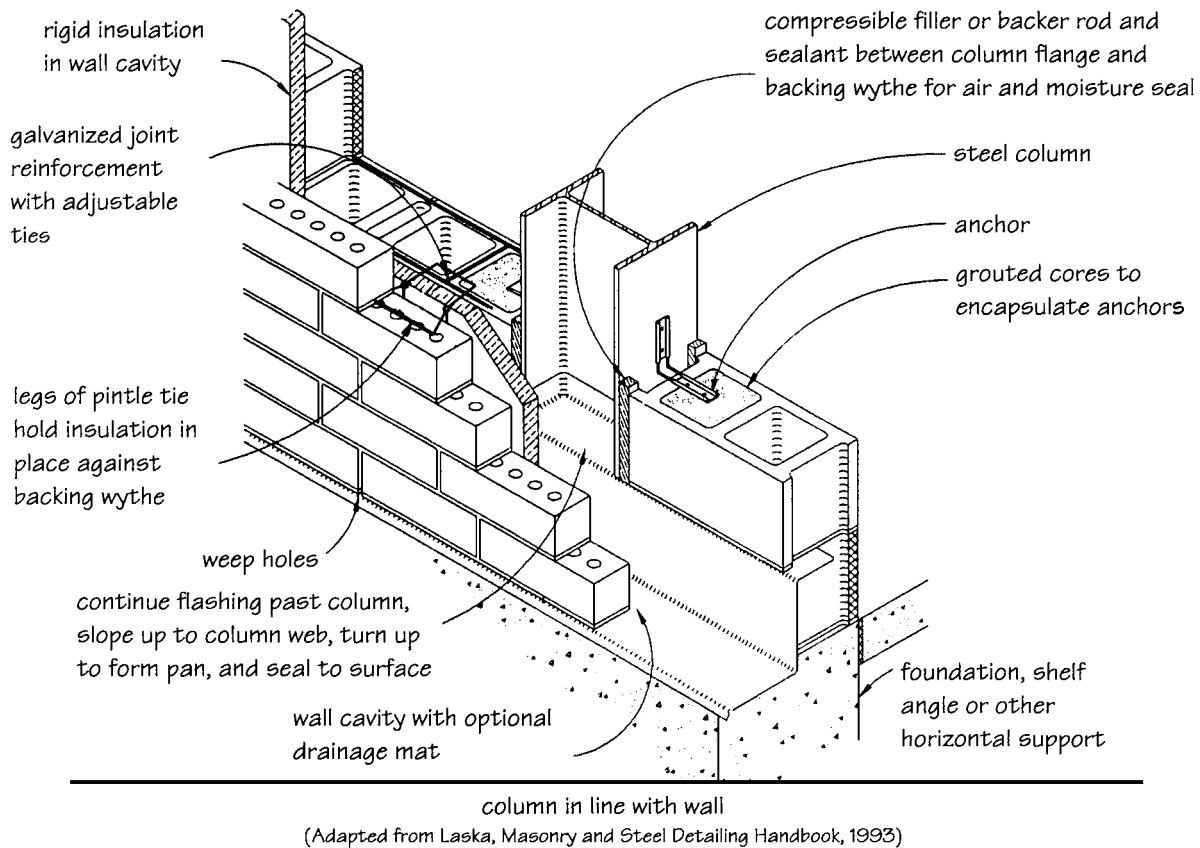


Figure 9-37 Seal gaps in backing wall against air and water penetration. (Adapted from Laska, Masonry and Steel Detailing Handbook, Aberdeen Group, 1993.)

joints. (Chapter 7 discusses various materials and their performance.) Both installation and material costs vary, and no general recommendation can be made solely on an economic basis. It is critical, however, that only high-quality materials be used, since failure can lead to significant damage, and replacement is both difficult and expensive. Weep holes are located in the head joints immediately above the flashing. Spacing of weep holes should generally be 24 or 32 in. on center for open joints depending on unit size, and 16 in. on center for those using wick material. Weep hole tubes should not be used, because the small openings are too easily obstructed by mortar droppings, insects, or other debris.